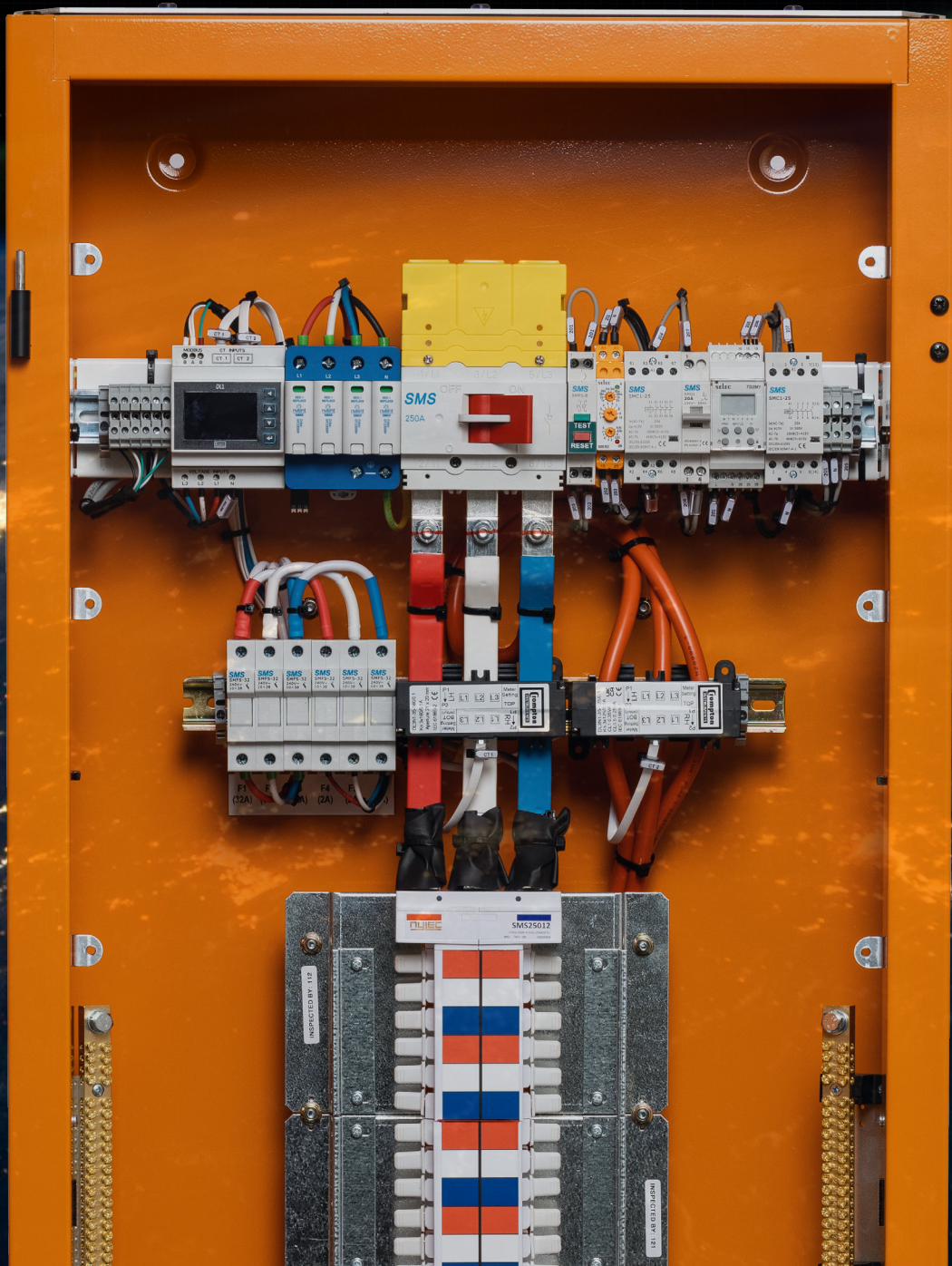


# VERSA

DISTRIBUTION BOARDS



# Unmatched Versatility Every Time

VERSA Distribution Boards are engineered to deliver unmatched flexibility and reliability. Designed with safety, performance and ease of installation in mind, VERSA will give you confidence, control and peace of mind.

# Your Trusted Experts

Colterlec has been delivering quality engineered electrical product solutions for over 30 years and continues to be a leading distributor of electrical product innovations across Australian industries. We partner with industry leading global brands to provide a comprehensive product range that meets the highest standards of performance, compliance and reliability.

Backed by an experienced team of technical experts our service capability extends beyond supply. We deliver engineered solutions from design and build through to ongoing maintenance and support every step of the way to ensure everything is working as it should be to reduce downtime, improve operations and efficiency and ensure long term reliability.

Our mission is to provide our stakeholders with quality services and solutions that exceed their expectations - every single time.

# Our Global Partners

Colterlec partners with industry leading global brands to ensure we provide product solutions that meet the highest standards of performance, safety and reliability. Working closely with our global partners we have access to the latest product solutions, faster project timelines, and expert support from a team that understands what you need.

# VERSA Distribution Boards

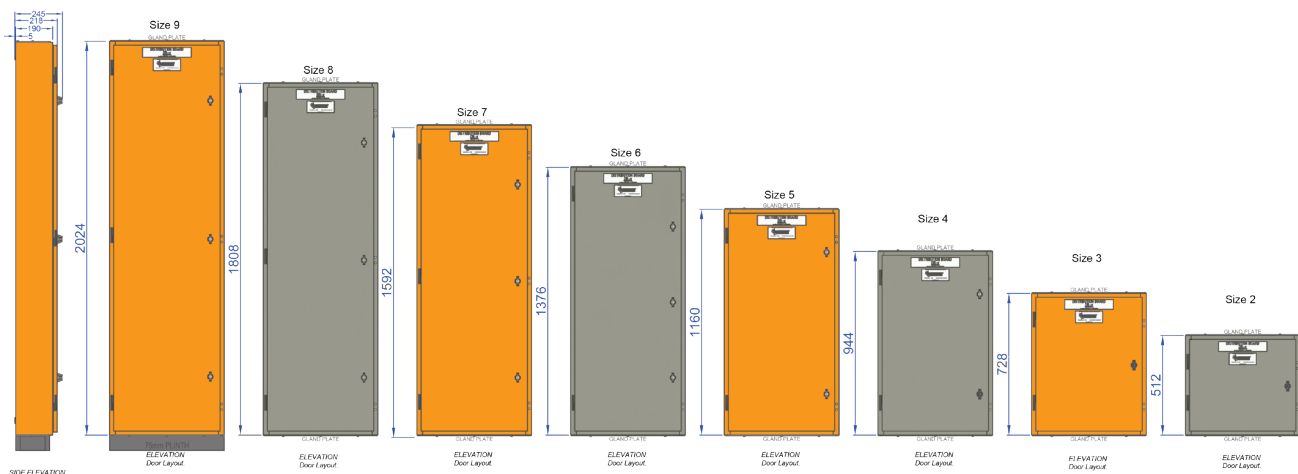
Proudly designed and built in Australia, VERSA Distribution Boards deliver reliable performance across all commercial and light industrial applications.

Offering unmatched versatility, VERSA adapts easily to a wide range of specifications and site standards. Its modular design ensures smooth integration and future ready scalability. Fully compliant with AS/NZS 61439 and rated IP54, VERSA Distribution Boards are engineered to provide flexibility, safety, and confidence in every installation.

Backed by smart engineering and quality components, VERSA bring installers and end users greater flexibility, safety, and confidence in every application—ensuring your electrical distribution is organised, protected, and ready to perform.

## Product Specifications

Feature	Specification
Compliance	AS/NZS 61439 low-voltage switchgear and control gear assemblies
IP Rating	IP54
Current Rating	Up to 250A
Construction Material	1.6mm Mild Steel
Gland Plates	3mm Aluminium - removable top and bottom
Finish	Pre-Treatment Zinc Phosphate to AS4506 - Powder Coated Finish
Door	Reversible door with double return for added rigidity
Hinges	Brass lift off pintle hinges – painted black for a premium finish
Escutcheons	Lift off standard, hinged optional
Cable Duct	Optional
Earth and Neutral Bars	Solid brass earth and neutral bars
Available Colours	X15 Orange and N42 Grey - other colours available on request
Circuit Protection	MCB and RCBO Only
Main Switch	VERSA 250A

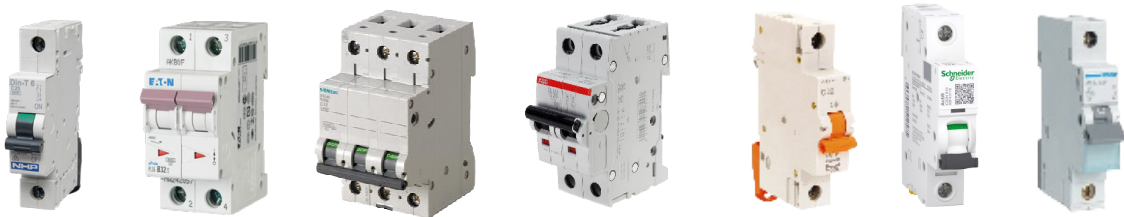


# Unmatched Versatility

Colterlec VERSA Distribution Boards feature a unique chassis design that can accommodate multiple industry leading Miniature Circuit Breakers (MCB's) and Residual Current Breakers with Overcurrent protection (RCBO's).

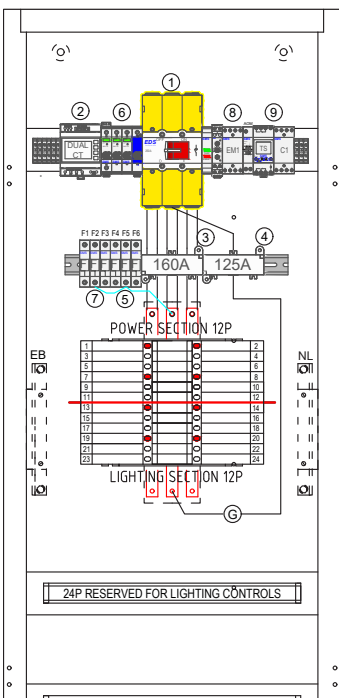
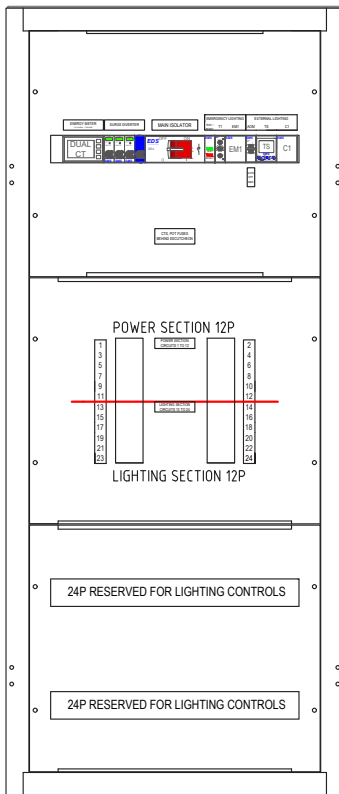
Our tested and proven design provides users with the flexibility to select components based on existing site requirements and preference — ensuring seamless compatibility across all major circuit protection brands.

*Circuit Breaker Brand must be specified at the time of order.*



# More than a Distribution Board

VERSA is more than just a standard electrical panel—it's a complete solution engineered for reliability, safety and flexibility. Discover the full capabilities of VERSA Distribution Boards and the peace of mind that you have made the right choice when performance matters.



## Product Features

- VERSA features a modular, made-to-order design, allowing flexible placement of equipment and components.
- Its internal layout is fully customisable rather than being fixed. Its multi-tiered arrangements accommodate complex system layouts with plinth mounting a standard option.
- Optional mechanical separation between sections for Building Management System (BMS), Energy Management System (EMS), and control sections as needed.
- Option for secondary chassis isolation when required, utilising the Versa Main Switch or Miniature Circuit Breakers.
- Automatic Transfer Switches and Load shedding capabilities available up to 160A.
- 27mm pitch chassis are available, suitable for miniature circuit breakers (MCBs) rated up to 125A.
- Metering capability designed to comply with Section J9 of the National Construction Code, ensuring full energy-monitoring and reporting requirements are met using the Crompton Multi-Load Metering Range.
- There are no limitations on chassis quantity or space for control equipment — the board will be sized to suit project requirements.
- Surge protection can be supplied to meet site requirements and provided using Erico surge protection products.
- Lighting control adapted and tailored to suit site requirements, with standard options for emergency and external lighting kits.
- Din rail space provision supports integration with lighting control systems and various third-party control modules.
- VERSA can accommodate all major electrical equipment brands for metering, surge protection, switchgear, control products, and any other site-specified components.
- Fully compatible with Colterlec Energy Monitoring System as well as all major EMS/BMS packages.

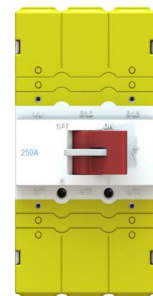
## Versa Operating Capabilities

- Maximum rating of 250A
- IP54 protection rating against dust and water ingress
- Tier width: 590mm
- Tier depth: 190mm
- Not suitable for mounting or housing Moulded Case Circuit Breakers (MCCBs)

# VERSA Main Switch Datasheet

Part Number	Description
VER-EDSMS3250	<b>250 AMP 3 Pole Load Break Switch</b>
<b>Test Standard</b>	
<b>Nominal Ratings</b>	
Rated Insulation Voltage, $U_i$ (V)	690
Rated Thermal Current $I_{th}$ (I)	250
Nominal Switching Current ( $I_e$ ) (A)	250
<b>Rated Operational Current (A)</b>	
AC-21B, AC-22B, AC-23B,	250 (@400/415VAC)
<b>Rated Operational Power for 3 Phase (1500rpm) Squirrel Cage Induction Motor (kW)</b>	
AC-23B	90 (@400/415VAC)
Impulse Withstand Voltage, $U_{imp}$ (kV)	6
Rated Short Circuit Making Capacity, $I_{cm}$ (kA)	7
Rated Short Time Withstand Current (1 sec), $I_{cw}$ (kA)	5
Max Let Through Current Withstand, $I_{pk}$ (kA)	21
A2s Value	2.5E +07
<b>Rated Fused Short Circuit</b>	
Back Up Fuse (A)	250
RMS Value (kA)	50
AC-23B	2500/ 3 times (@400/415VAC)
<b>Electrical Endurance (Operations)</b>	
With Load	200
Without Load (Cycles)	1400
Terminals/ Bolt Size	M8
Mechanical Endurance (Operations)	16000
Max Cable Size	120mm <sup>2</sup>
Required Terminal Torque (Nm)	15-22
<b>Locking Facilities</b>	
Lock Off	Built in for M6 Padlock
Lock On	Knockout for M6 Padlock

This switch has been designed and tested to be compliant to AS/NZS61439 as a 250A rating inside an enclosure. Variation to tested enclosure size will require individual confirmation of compliance.



# VERSA Single Chassis Distribution Boards

WITH METER		
CHASSIS	HEIGHT (mm)	PART NUMBER
12	944	VER-12M*
24	944	VER-24M*
36	1160	VER-36M*
48	1160	VER-48M*
60	1376	VER-60M*
72	1376	VER-72M*
84	1592	VER-84M*
96	1592	VER-96M*

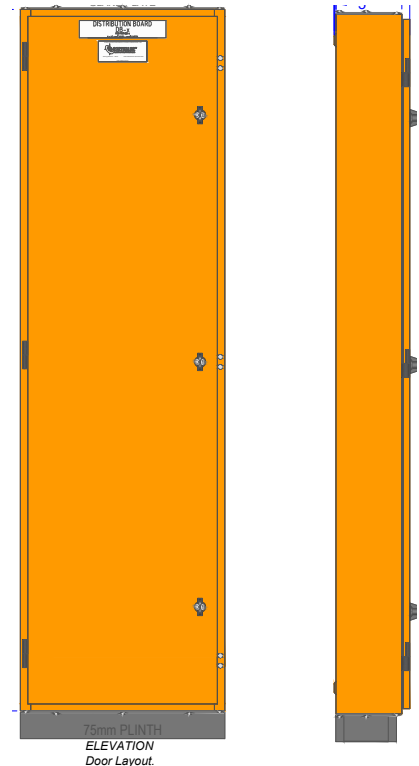
Includes 250A Main Switch, Chassis and Crompton SL1-01 Meter.

WITHOUT METER		
CHASSIS	HEIGHT (mm)	PART NUMBER
12	728	VER-12*
24	728	VER-24*
36	944	VER-36*
48	944	VER-48*
60	1160	VER-60*
72	1160	VER-72*
84	1376	VER-84*
96	1376	VER-96*

Includes 250A Main Switch and Chassis.

*	DESCRIPTION	ADD HEIGHT (mm)
1DR	+ 1 Row DIN Rail (Bottom)	216
2DR	+ 2 Row DIN Rail (Bottom)	432
PL	Black Powder Coated Plinth	75

Example Order No. VER-84M-1DR-PL
84P Chassis
SL1-01 Meter
1 Row DIN Rail
Black Powder Coated Plinth (overall height now 1667mm)



# VERSA Dual Chassis Metered Distribution Boards

The VERSA Dual Chassis Metered Distribution Boards combine precision metering with robust dual-chassis construction, providing reliable performance, enhanced monitoring, and easy integration. Includes 250A Main Switch and Dual Load Metering.

POWER CHASSIS	LIGHTING CHASSIS	HEIGHT (mm)	PART NUMBER
12	12	944	VER-12-12*
12	18	1160	VER-12-18*
12	24	1160	VER-12-24*
12	30	1160	VER-12-30*
12	36	1160	VER-12-36*
12	48	1376	VER-12-48*
12	60	1376	VER-12-60*
12	72	1592	VER-12-72*
12	84	1592	VER-12-84*
18	12	1160	VER-18-12*
18	18	1160	VER-18-18*
18	24	1160	VER-18-24*
18	30	1160	VER-18-30*
18	36	1376	VER-18-36*
18	48	1376	VER-18-48*
18	60	1592	VER-18-60*
18	72	1592	VER-18-72*
18	84	2024	VER-18-84
24	12	1160	VER-24-12*
24	18	1160	VER-24-18*
24	24	1160	VER-24-24*
24	30	1376	VER-24-30*
24	36	1376	VER-24-36*
24	48	1376	VER-24-48*
24	60	1592	VER-24-60*
24	72	1592	VER-24-72*
24	84	2024	VER-24-84
24	96	2024	VER-24-96
30	12	1160	VER-30-12*
30	18	1160	VER-30-18*
30	24	1376	VER-30-24*
30	30	1376	VER-30-30*
30	36	1376	VER-30-36*
30	48	1592	VER-30-48*
30	60	1592	VER-30-60*
30	72	2024	VER-30-72

POWER CHASSIS	LIGHTING CHASSIS	HEIGHT (mm)	PART NUMBER
36	12	116	VER-36-12*
36	18	1376	VER-36-18*
36	24	1376	VER-36-24*
36	30	1376	VER-36-30*
36	36	1376	VER-36-36*
36	48	1592	VER-36-48*
36	60	1592	VER-36-60*
36	72	2024	VER-36-72
48	12	1376	VER-48-12*
48	18	1376	VER-48-18*
48	24	1376	VER-48-24*
48	30	1592	VER-48-30*
48	36	1592	VER-48-36*
48	48	1592	VER-48-48*
48	60	2024	VER-48-60
48	72	2024	VER-48-72
60	12	1376	VER-60-12*
60	18	1592	VER-60-18*
60	24	1592	VER-60-24*
60	30	1592	VER-60-30*
60	36	1592	VER-60-36*
60	48	2024	VER-60-48
72	12	1592	VER-72-12*
72	18	1592	VER-72-18*
72	24	1592	VER-72-24*
72	30	2024	VER-72-30
72	36	2024	VER-72-36
72	48	2024	VER-72-48
84	12	1592	VER-84-12*
84	18	2024	VER-84-18
84	24	2024	VER-84-24
96	12	2024	VER-96-12
96	18	2024	VER-96-18
96	24	2024	VER-96-24





## Our Locations

### Newcastle

8 Rosegum Road  
Warabrook NSW 2304

### Sydney

Unit 1/48 Anderson Road  
Smeaton Grange NSW 2567

### Wollongong

Unit 1/222 Berkeley Road  
Unanderra NSW 2526

### New Zealand

Unit A 38 Greenmount Drive  
East Tamaki 2013  
0800 367 229  
[sales@colterlec.co.nz](mailto:sales@colterlec.co.nz)

### Victoria

7/7 Dalton Road  
Thomastown VIC 3074

### Queensland

36 Bell Are Avenue  
Northgate QLD 4013

### South Australia

5 Star Avenue  
Dudley Park SA 5008

### Western Australia

7 Focal Way  
Bayswater WA 6053

### Northern Territory Australian Capital Territory

### Tasmania

1300 36 26 26  
[sales@colterlec.com.au](mailto:sales@colterlec.com.au)

**iDrives**  
POWERED BY  COLTERLEC™