

AVAILABLE WORLDWIDE

ENCODERS, SENSORS AND SOLUTIONS



LEINE+LINDE

ROBUST AND RELIABLE PARTNER

Leine Linde is a leading manufacturer of robust encoders, sensors, and system electronics for industrial applications. The products and solutions are mainly used for measuring speed and position and are known for their robustness, performance and reliability. Our products are designed for heavy-duty operations located in harsh environments.

SUPPORT AND SERVICE WORLDWIDE

LeineLinde has an active global presence on all continents of the world, working in close cooperation with customers and partners through the local offices and representatives.

SWIFT AND ACCURATE DELIVERY

LeineLinde offers 24 or 48 hour express manufacturing, one week manufacturing, or normal customer-order-driven production, which is completed within ten working days.

CUSTOMIZED FOR YOUR NEEDS

Every operation is unique, and standard solutions may not always meet your specific requirements. That's why we offer tailored encoders and solutions precisely to your needs.

Find out more about us and our products and services on our website www.leinelinde.com



We make encoders and sensors robust enough to keep things running for decades

Leine Linde's encoders and sensors are built for the toughest challenges. Whether you're dealing with extreme temperatures, high humidity, dust, or vibrations, our products are designed to keep your operations running smoothly. We tailor our solutions to your specific needs, making them perfect for heavy-duty environments like steel mills, cranes, paper mills, mining machinery, or wind power plants.

Find encoders with the right mechanics, electronics and certifications at leinelinde.com/productfinder



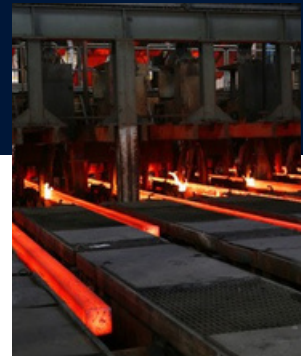
CRANES & LIFTING



PULP & PAPER



RENEWABLE ENERGY



STEEL & METALLURGY



MARINE & OFFSHORE



MINING



HAZARDOUS LOCATIONS (EX)

Here, wherever you are

Customer support with high availability all over the world. Find your closest point of contact for sales and technical support at leinelinde.com or info@leinelinde.com



ACCURATE, DURABLE AND FLEXIBLE

Reliable encoders and sensors

Discover Leine Linde's advanced solutions, designed for accuracy and reliability. Our products enhance operational efficiency, ensure robust performance, and deliver exceptional performance. Experience innovation that meets your specific needs, from high-quality encoders to resilient sensors, all tailored to optimise your industrial processes. We're here to help you to maximize uptime and performance on your machinery.

Find out more
on our website:



FUNCTIONAL SAFETY

Leine Linde's functional safety encoders are SIL2 and PLd certified, which demonstrate their robustness and reliability. These encoder solutions have extremely high durability and accuracy, which make them the most suitable components for functional safety systems.

ENCODERS FOR DRIVES

In a drive system, the encoder provides the link between the motor and frequency converter. Leine Linde offers a wide range of encoders in various sizes and with varying robustness and functionality to suit the relevant application.

CONDITION MONITORING

By providing relevant diagnostics, encoders today are so much more than just encoders. With their condition monitoring functionalities, they enable predictive maintenance and problem-free operation time.

ENCODERS FOR AUTOMATION

Advanced machines with complex movement patterns means even greater monitoring requirements. There are a number of different communication interfaces available in Leine Linde's product range for satisfying this need within industrial automation.



1000 EXTREME

Extreme in every way. An encoder to handle most things.

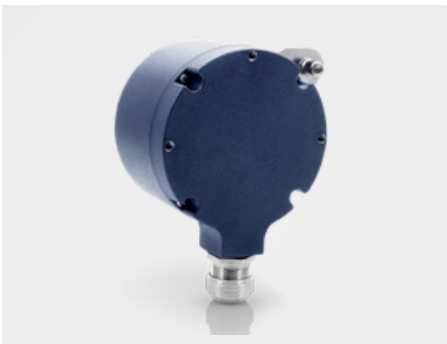
The 1000 series was produced to be used in the very toughest applications where mechanical stress, vibrations and high temperatures mean that other encoders are not suitable. This encoder series is available with both an incremental and an absolute signal or as a combined variant.



900 PREMIUM

Absolute encoder taking functionality to a new level.

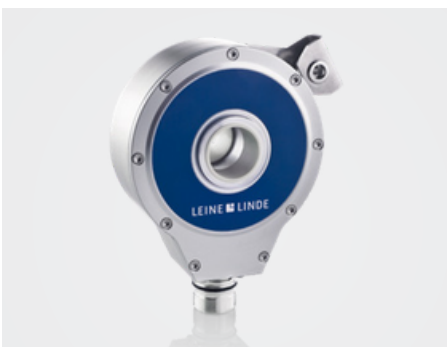
The 900 series is a solutions platform managing complex position feedback in the form of an encoder with different fieldbus and communication interfaces. It includes variants with an incremental output next to the absolute output, and can be provided with an integrated programmable functional safety system. Durable and resistant!



800 HEAVY DUTY

The long-lasting incremental encoder champion.

Are you looking for a robust, maintenance-free and cost-effective encoder with a long service life? Then the 800 series is the right solution, and it's also the first choice of most engineers! The 800 series can be equipped with Leine Linde's advanced diagnostics system, ADS, for condition-based maintenance.



700 COMPACT

Compact yet robust encoder for humid conditions.

Our marine approved encoders are built to withstand the toughest of operations while at the same time being small enough to fit in tight spaces. With its compact yet robust design, it is perfect for installations where space is limited.



600 INDUSTRIAL

Absolute encoder for demanding automation.

The 600 series encoder is available in singleturn and multiturn variants, and if needed, in stainless steel and with ATEX/IECEx certifications. It comes with serial interfaces or with fieldbus interfaces such as PROFINET, PROFIBUS, EtherNet/IP, EtherCAT, CANopen, DeviceNet or DRIVE-CLiQ.





500 ROBUST

Versatile and modular encoders.

These encoders conform to European industrial standards and are available in a hollow-shaft or shaft design, ensuring simple installation. The 500 series is the right choice if you are looking for a standard encoder with unrivalled performance.



300 MINIATURE

Robust and extremely reliable miniature encoders.

These incremental encoders are only 30 millimetres in diameter and intended for installation in applications where space is restricted.



4000 LINEAR

Linear inductive encoder for position feedback.

Extremely robust and fast high-resolution linear measurement for roll-gap control or similar applications, withstanding shock, vibrations and high temperatures. This encoder design with plug-and-play features has eliminated the need for a separate air compression or filtering system. With solid encapsulation and inductive scanning all models are well protected and resistant to disturbance.



2000 BEARINGLESS

For large shafts, tight spaces and long durability.

Certain motors require an encoder for speed feedback for the main shaft, where space is often limited. The 2000 series is based on a concept comprising a rotating magnetic ring with one or several scanning units to read out the high-resolution measurement and generate incremental signals.



ADS UPTIME



INTERFACE ELECTRONICS

Our gateways and modules adjust signals and improve usability.

Convert or split the signals, enable fieldbus communication, optolink transmission, or add a module for overspeed monitoring with programmable speed switch functionality.



ACCESSORIES

For product installations and extension of product functionality.

Leine Linde offers a wide range of shaft couplings, connectors and cables, measuring wheels, adapter flanges, mounting brackets, torque arms or tether arms – just as important as the encoder itself.



