

PROXXI BAND

Wearable Voltage Alert

Enhance Safety, Productivity, and Peace of Mind

Electrocution is the third leading cause of workplace fatalities. Traditional safety processes like LOTO and PPE have prevented many incidents, but human error remains a significant risk factor. Near misses often go unreported, making it challenging to address safety concerns proactively.

Proxxi by Grace provides real-time alerts to workers approaching live voltage, adding an extra layer of security for when the unexpected occurs. This wearable voltage-detecting wristband, companion app and dashboard empower workers and management with actionable data to prevent injuries and fatalities, enhancing overall safety and productivity.



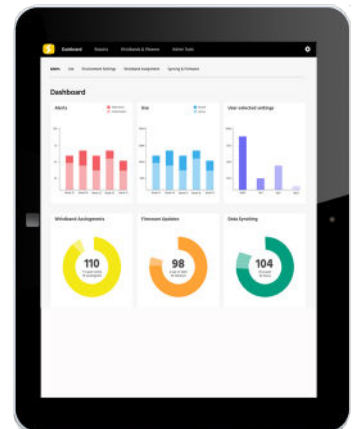
W-PRX-WB5-1Y
Includes watch &
1 year dashboard subscription

Real-Time Electrical Hazard Awareness

- **Immediate Alerts:** As workers near energized equipment, Proxxi emits haptic vibrations, audible beeps, and visual flashes. Alerts intensify as they enter or near the limit of approach boundary, ensuring awareness even in noisy or distracting environments.
- **Wide Voltage Range Detection:** Effective in any voltage environment from 110V to 500kV, making it suitable for a variety of industrial settings.
- **Worker-Controlled Settings:** Allows workers to mute or adjust alerts for specific tasks like energized work and troubleshooting, giving them control without compromising safety.

Data-Driven Safety Insights





- ⚡ **Identify Risks Early:** Detect high-risk areas, teams, or individuals through detailed incident reports and usage data.
- ⚡ **Enhance Training and Compliance:** Track adoption rates and training effectiveness to improve safety protocols continuously.
- ⚡ **Proxxi Voltage Dashboard:** Provides management with analytics on worker alerts, usage patterns, and compliance.



Why Choose Proxxi by Grace?

- **Prevent Electrical Catastrophes:** Reduce the risk of incidents that injure workers, disrupt operations, and result in high costs to companies and their employees.
- **Proactive Risk Management:** Move beyond lagging indicators like injuries and incomplete near-miss reports by leveraging comprehensive data to prevent incidents before they occur.
- **Boost Employee Confidence:** Demonstrate a commitment to worker safety, aiding employee retention and recruitment.

PRODUCT DETAILS	SPECIFICATIONS
Voltage Detection Range	- 110V - 500kV AC; wristband is set to default at 480V for Industrial Applications
Alert Mechanisms	- Haptic vibrations - Audible beeps - Visual LED flashes
Compatibility	- Works with Proxxi mobile app and dashboard
Battery Life	- Rechargeable battery with approximately 30 hours per charge
Durability	- Designed to withstand harsh industrial environments
Dimensions	- Band: 262mm x 32.5mm x 12.5mm (max wrist size 247mm or 9.7in circumference)
Connection Type	- Micro USB, Bluetooth (5.0, 4.2 compatible)
Wristband AC Frequency	- 50 and 60 Hz
Material	- Non-Conductive
Certifications	- IP68 Compliant, CE, CSA, FCC, ICC

DESCRIPTION	PART NUMBER
50Hz Wristband & 1-year Proxxi Hub subscription	W-PRX-WB5-1Y
50Hz Wristband & 2-year Proxxi Hub subscription	W-PRX-WB5-2Y
Replacement band (no sensor)	W-PRX-BAND
Replacement Charger	W-PRX-CHRG
Replacement Charging Cable	W-PRX-CABL
SOFTWARE RENEWAL	PART NUMBER
1-year	W-PRX-SUB-1Y